

CITIZEN PARTICIPATION PLAN

FOR THE

FORMER MANUFACTURED GAS PLANT AT
PATCHOGUE, SUFFOLK COUNTY, NY

Prepared by

National Grid

August 2017

TABLE OF CONTENTS

<u>Section</u>	<u>Title</u>	<u>Page</u>
1.0	INTRODUCTION.....	1
2.0	BASIC SITE INFORMATION	2
3.0	REMEDIAL PROGRAM OVERVIEW	4
3.1	New York State Remedial Program Overview	4
3.2	Project Area Investigation History.....	4
4.0	CITIZEN PARTICIPATION ACTIVITIES.....	6
4.1	Goals and Objectives	6
4.2	Tools and Methods.....	8
4.2.1	Document Repository	8
4.2.2	Fact Sheets, Public Meetings and Comment Period	9
4.2.3	Responsiveness Summary.....	10
4.2.4	Information Newsletters.....	10
4.2.5	Telephone Hotline.....	10
4.3	Roles and Responsibilities	10
4.4	Schedule for Implementing Elements of the CPP.....	11
5.0	SUMMARY	11

List of Figures

1	Site Location Map.....	3
---	------------------------	---

List of Appendices

Glossary of Key Citizen Participation Terms and Major Program Elements	A
Identification of Document Repositories	B
Identification of Affected and/or Interested Parties.....	C
Identification of Project Management Contacts	D

1.0 INTRODUCTION

Citizen participation is an integral component of remedial programs in New York State. Input from affected or interested individuals and organizations on the remedial program helps ensure outcomes that account for both technical and human concerns for protecting public health and the environment. A project-specific plan is needed to inform and involve community residents, public and private leaders, and other stakeholders. This Citizen Participation Plan (CPP) documents the planned project-specific public outreach activities and resources organized for the remedial program associated with the former Manufactured Gas Plant (MGP) site.

The primary purpose of this CPP plan is to outline a variety of communication methods that, based on applicable New York State law and New York State Department of Environmental Conservation (NYSDEC) regulations and guidance, provide for constructive communication of program activities between the stakeholders and other interested parties. This CPP includes methods intended to inform interested parties of program developments, elicit responses and public involvement, and provide a central point of contact for inquiries regarding the remedial program for the former Patchogue MGP Project. Given this context, this CPP presents the planned communication and outreach activities, describes how interested individuals and groups can participate in the remedial program, and provides a variety of reference materials to facilitate gaining access to project-specific information and management personnel.

Both the NYSDEC and National Grid are committed to the implementation of this CPP as required by Title 6 of the New York Code of Rules and Regulations (NYCRR) Part 375, applicable NYSDEC guidance (e.g., DER-23/Citizen Participation Handbook for Remedial Programs (January 2010), the Administrative Order on Consent (Index # A2-0552-0606) and the statewide Inactive Hazardous Waste Site Citizen Participation Plan (NYSDEC, 1988). As required by 6 NYCRR Part 375-1.10, NYSDEC and National Grid will review and update this CPP to account for significant changes in the Patchogue Project's remedial program.

2.0 BASIC SITE INFORMATION

In February 2007, National Grid signed an Administrative Order on Consent (Index # A2-0552-0606) with the NYSDEC to investigate and remediate hazardous substances believed to exist at the Patchogue site. The Patchogue former MGP site, currently vacant, is located at 234 West Main Street on a parcel south of Main Street, east of River Avenue, and adjacent to Patchogue River in the Village of Patchogue, Town of Brookhaven, Suffolk County, New York. The site is approximately 3.6 acres. The site is located along the Patchogue River, just south of where the River exits Patchogue Lake. (See Site Location Map).

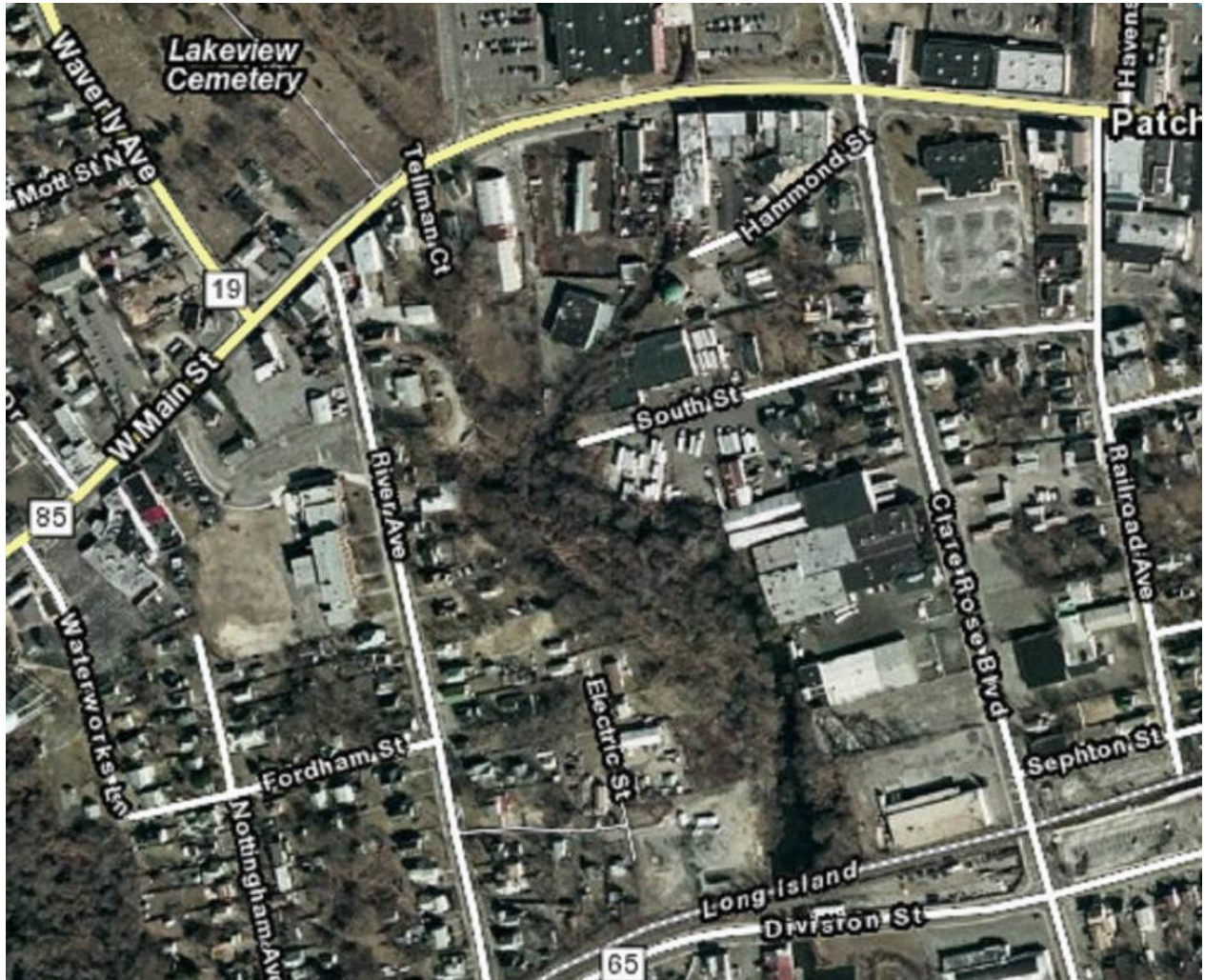
The site is owned by National Grid.

History and Operations

The Manufactured Gas Plant was constructed by the Patchogue Gas Company approximately in 1906 and produced gas through 1917 as a continuing facility and through 1925 in emergencies. After 1925, the site was modified to a gas distribution facility, which it remained until the 1970's, when LILCO sold the site to third parties. From the mid-1970s through early 2005 the site was used as a refrigeration equipment and scrap storage yard, before National Grid acquired it in May 2005 for purposes of remediation. The manufacture of gas, in general terms, consisted of heating coal and recovering the vapors to produce raw gas. Byproducts, such as coal tar, sludge, oils, ashes, contaminated wood chips used for gas purification and other chemicals, were produced from the scrubbing systems used to clean impurities from the raw gas, and these were either recycled for energy recovery and chemical feedstocks, or disposed.

The land use is currently vacant.

Figure 1
Site Location Map



Current Site Description

The Site is on an irregularly shaped tract of land covering approximately 2 acres, on West Main Street in Patchogue. Neither National Grid nor its predecessor companies owned the land between the mid-1970's and May 2005, when it was re-acquired by National Grid. The land is presently vacant.

3.0 REMEDIAL PROGRAM OVERVIEW

3.1 New York State Remedial Program Overview

National Grid entered into an Administrative Order on Consent covering the Patchogue site in February 2007. The Order requires a Remedial Investigation of the Site, followed by a Feasibility Study of remedial options, a Remedial Action Plan, a Remedial Design and then construction and operation of a remedy to eliminate, to the extent possible, environmental hazards detected at the site. The Consent Order also permits National Grid to perform one or more partial Interim Remedial Measures to more quickly remediate contamination prior to adoption of a Remedial Action Plan. Once the Remedial Design is approved by NYSDEC, National Grid will commence construction. Finally, National Grid will submit to NYSDEC a detailed Post-Remedial Operations and Maintenance Plan (O&M Plan). The O&M Plan provides the means to track the effectiveness of the completed remedial work.

For more information on the remedial program and process in New York State, interested parties can contact any of the state representatives listed in Appendix D.

3.2 Project Area Investigation History

A U.S. Environmental Protection Agency Preliminary Assessment was conducted in 1986. EPA concluded that no further action on the site was required. An Administrative Consent Order for a Preliminary Site Assessment of the site was issued in September 1999. The final PSA Report was accepted by the NYSDEC in March 2002. The PSA found that additional investigative work would be required, which is the subject of the current ACO.

A Preliminary Site Assessment accepted by the NYSDEC in 2002 found materials expected on a former MGP site as well as other wastes associated with industrial use. Possible MGP contaminants were detected in soil, groundwater, surface water and sediment samples. Based on the PSA, the residues include volatile aromatic hydrocarbons such as benzene, toluene, ethylbenzene and xylenes (BTEX) and Polycyclic Aromatic Hydrocarbons (PAHs). There are also indications of subsurface structures that may have been associated with past MGP operations.

A Final Remedial Investigation Report was accepted by the NYSDEC in Fall 2009. The Key Findings are:

- There are no imminent hazards to human health. There are potential pathways through which people can be exposed to the potentially harmful materials. These pathways may require additional study or remedial action. The results of the Qualitative Exposure Assessment conducted as part of the Remedial Investigation will be used to support future site remediation decision-making.
- The site exhibits the characteristics of a former MGP site, including the presence of contaminants usually associated with such use. The main contaminant onsite is MGP tar, a dark viscous material that is denser than water and very persistent in the environment. The MGP tar acts as a source for soil and groundwater contamination. The MGP tar is made of several common chemicals, classified into two groups. The first is BTEX, which stands for the four chemicals found in the group (Benzene, Toluene, Ethylbenzene, and Xylene). These are volatile organic carbons which tend to dissolve more in water and are found in most petroleum based products (e.g. gasoline, diesel fuel, solvents, and adhesives). The second group is known as Polycyclic Aromatic Hydrocarbons (PAHs). These are semi-volatile organic carbons and are less likely to dissolve in water, as they are the by-products of incomplete combustion. They can be found in car exhaust and grilled meats.
- The Remedial Investigation developed sufficient information to identify and delineate impacts to surface soils, groundwater, sediments, surface water and soil gas, and to complete a Fish and Wildlife Resources Impact Analysis. The MGP tar is found in areas of the site associated with historic structures. There is an additional location of petroleum impacts that is likely site related, to the southeast of the main site, closer to the Patchogue River. The groundwater at the site flows from the northwest to the southeast. Groundwater which moves through the tar becomes contaminated. The contaminated groundwater is then discharged into the river where dilution and degradation quickly act on the contaminants.
- The Remedial Investigation determined that the presence of contaminants in the soils, groundwater, sediments and surface water do not present a risk to the transient fish and wildlife present in the environment on or near the site.

4.0 CITIZEN PARTICIPATION ACTIVITIES

This section presents the specific citizen participation and outreach activities planned for implementation during the remedial program and to be implemented in accordance with 6 NYCRR Part 375. Operating under project-specific citizen participation goals, clearly defined objectives will be achieved by implementing a range of communication tools and methods. The planned activities are geared toward making project-specific information (e.g., work plans, technical reports, information sheet summaries) available to the public; facilitating communication among stakeholders including the creation of contact lists; scheduling and conducting public meetings; establishing comment periods; and notifying the public of document availability, public meetings, comment periods and major program milestones.

4.1 Goals and Objectives

The central goal of this CPP is to achieve effective, open communication among stakeholders and interested parties, National Grid and the NYSDEC. Common goals include:

- Communicate program goals and major milestones, actions and outcomes;
- Inform citizens and others of ongoing project activities, status and progress;
- Provide citizens (and all stakeholders) a forum for input and comment; and
- Engender a public understanding of constituents of interest, their potential effects on human health and the environment, and appropriate responses to mitigate those effects.

In order to accomplish these goals, the following specific objectives will be pursued through the implementation of this CPP:

- Consistently communicate goals, accomplishments and status of the project to the contact list (including community leaders, public officials and the wider community, as necessary) through appropriate means;
- Establish, maintain, update and utilize the contact lists;
- Educate the community, in lay terms, about the nature and magnitude of potential site risks, including instructions for mitigating risk (if appropriate) and assurances that the environment and worker/public health and safety are protected;
- Provide interested parties the opportunity to review and comment on technical reports generated through the remedial program (e.g., public comment periods and document repository as required by 6 NYCRR Part 375);
- Provide interested parties the opportunity to present opinions and ideas during the remedial program (e.g., conduct public meeting/comment period and availability session as required by 6 NYCRR Part 375);
- Provide responses to public review and comment (e.g., prepare a responsiveness summary as required by 6 NYCRR Part 375);
- Provide the news media with interviews or press releases of National Grid authorized spokespersons, as available, to ensure accurate coverage of remedial program activities;
- Provide a designated project spokesperson as point of contact through which community inquiries regarding the project can be addressed consistently and effectively; and
- Periodically review the effectiveness of the citizen participation and outreach activities during the remedial program and make adjustments in this CPP's methods and/or activities, if necessary.

The community contact list is provided in Appendix C and the Patchogue former MGP Site Project management contacts (NYSDEC, NYSDOH and National Grid representatives) are provided in Appendix D.

4.2 Tools and Methods

There are many ways to reach and communicate with the community and other interested parties as this CPP is implemented over the course of the remedial program. A variety of outreach tools and methods will be used to ensure proper communication with the interested parties that include various organizations, public and business leaders, and a diverse assemblage of individuals of all ages, education backgrounds and cultures.

Interested parties will be informed and invited to participate in the planned citizen participation activities through appropriate means such as mailings to the contact list, legal notice in newspapers, press releases, information sheets and other documents made available in the document repository.

The following specific public participation activities will be implemented as required by 6 NYCRR Part 375 and current NYSDEC guidance.

4.2.1 Document Repository

A Document Repository has been established at the local public library which has agreed to maintain in one file all of the relevant documents related to the Site. The Document Repository is located at:

Patchogue Medford Library
54-60 East Main Street, Patchogue, NY 11772
T: 631-654-4700
W: www.pmlib.org <http://www.pmlib.org>>

The following documents, as available, will be placed in the Repository:

- Administrative Order on Consent
- Citizen Participation Plan
- Fact Sheet Announcing the Start of the Remedial Investigation
- Remedial Investigation Work Plan
- Remedial Investigation Report

- Reports of any Interim Remedial Measures
- Feasibility Study Report;
- Proposed Remedial Action Plan;
- Record of Decision (ROD);
- Remedial Design;
- Post-Remedial O&M Plan; and
- Other Materials (e.g., Information Sheets, Notices, etc.).

4.2.2 Meetings, Meeting Fact Sheets and Comment Period

After completion of the RI Report a Public Meeting was held in December 2009 to discuss its findings. After the Feasibility Study Report was completed, the preferred remedy for the site was presented in a Proposed Remedial Action Program (PRAP), subject to public review and comment at a Public meeting held in March 2011. During the RI Public Meeting, NYSDEC, NYSDOH and National Grid project managers summarized the findings of the RI Report and of IRMs completed, and answered questions regarding project area characterization, data and activities. At the PRAP Public Meeting, remedial alternatives presented in the Feasibility Study, the preferred remedy presented in the Proposed Remedial Action Program, costs, implementation schedules and criteria used in evaluating the preferred remedy will be discussed. After the PRAP comment period ends, NYSDEC and NYSDOH will review all public comments from the Public Meeting and submitted during the comment period and, where applicable, incorporate the comments into the Remedial Action Program.

Fact Sheets were distributed to the interested parties and proximate community at the time of the beginning of the Remedial Investigation, the acceptance of the RI Report (including announcement of Public Meeting) and the announcement of the PRAP (also including announcement of the Public Meeting).

4.2.3 Information Newsletters/Handouts

Information newsletters/Handouts will be prepared and distributed to the contact list in order to announce activities that may impact normal community activities, or at major project milestones and accomplishments throughout the remedial program (e.g., start of construction, major report completion, etc.). Written in lay terms, information newsletters will describe and summarize the upcoming work, the project area's history, review the goals of the project, update the status of project plans and/or results, list opportunities for citizen involvement, list key contacts and list the location of the document repositories.

4.2.4. Telephone Hotline

National Grid has established a Telephone Hotline for neighbors of the Patchogue MGP site. The phone number is 631 348 6250. There will be occasional news updates about the investigation, and the Hotline can be used at any time to leave questions about the investigation.

4.2.5 Responsiveness Summary

Public questions, comments and concerns voiced during the public meeting and collected during the comment period after the PRAP meeting will be addressed by the NYSDEC and published in the Remedial Action Program's Responsiveness Summary. Agency responses are to address both the broad general concerns and the significant questions communicated by the interested parties.

4.3 Roles and Responsibilities

The specific roles and associated responsibilities for implementing this CPP are:

- NYSDEC Remedial Project Manager - The NYSDEC Project Manager is responsible for enforcement, oversight and management of the overall remedial program. Typical citizen participation-related activities include making presentations at public meetings, reviewing project documents such as information sheets and providing technical assistance in preparing the responsiveness summary or answering public inquiries.
- NYSDEC Citizen Participation Specialist - The Citizen Participation Specialist assists the project managers in implementing the CPP. Typical activities include preparation and/or review of information sheets and the responsiveness summary and coordination of public meetings and availability sessions.

- National Grid Project Manager - The National Grid Project Manager, in cooperation with the NYSDEC Project Manager, is responsible for implementing the overall remedial program at the site. Typical citizen participation-related activities include management of CPP implementation, presentations at public meetings and technical assistance to the NYSDEC Project Manager and Citizen Participation Specialist.

4.4 Schedule for Implementing Elements of the CPP

Implementing elements of this CPP will depend upon completion by National Grid and final approval by the NYSDEC of various plans and reports required by the Consent Order governing the Patchogue Site, such as the RI Work Plan, RI Report, FS Report, Remedial Design, etc. National Grid will establish the Document Repository as soon as the RI Work Plan is approved and will place all completed documents in the Repository for public review. Public comments and hearings will be scheduled on NYSDEC acceptance of the Remedial Investigation Report and NYSDEC completion of the Proposed Remedial Action Program. The Responsiveness Summary will be completed shortly after close of the public comment period. Distribution of Fact Sheets or information sheets will also occur after completion of significant remedial or IRM construction activities at the Patchogue Site.

5.0 SUMMARY

Guided by the goals and objectives of this CPP, implementation of the planned public outreach and citizen participation activities will ensure the timely communication of important program information of interest to the local community. Citizen involvement and interaction in the remedial program will be facilitated through specific opportunities such as public meetings, public comment periods, availability sessions and use of the Document Repository. Throughout the remedial program, this CPP and its specific outreach tools and methods will be monitored and, as required and agreed by the NYSDEC and National Grid will be adjusted to improve its effectiveness in responding to community needs.

Appendix A

GLOSSARY OF KEY CITIZEN PARTICIPATION TERMS AND MAJOR PROGRAM ELEMENTS

Citizen Participation Plan (CPP) - A document that describes the project-specific citizen participation and outreach activities that will take place alongside the technical components of the remedial program. The CPP also provides project information, citizen participation goals and objectives, and lists of contact persons and document repositories.

Citizen Participation Specialist - An NYSDEC staff member whose duty it is to provide guidance and assistance in carrying out the CPP. The Citizen Participation Specialist is the key contact for public inquiries about the project and the remedial activities.

Contact List - A list in the CPP (Appendix B) containing names and addresses of individuals, groups, organizations, news media and public representatives interested and/or affected by the project. The contact list is used to distribute important information and notices about the project and the remedial program.

Document Repository - Project documents and other information are placed in the Document Repository to facilitate convenient public access to these materials. Documents are available for public reference and review at the offices of Medford Public Library 4 in Patchogue. Refer to Appendix B for more information about the Document Repository location and hours of operation.

Feasibility Study (FS) - Based on information gathered during the Remedial Investigation (RI), the FS is a process for developing, evaluating and selecting appropriate Remedial Action (RAs) for limiting or eliminating the potential human and environmental hazards of a site. The FS sets out the goals of the remedial actions to be taken, evaluates the most appropriate alternatives and selects the best alternative based on several criteria. The selected remedy is then recommended for implementation in the Proposed Remedial Design Plan, which is subject to public review and comment.

Interim Remedial Measure (IRM) - A discrete action which can be conducted at a site relatively quickly to reduce the risk to people's health and the environment from a well defined waste problem. An IRM can involve cutting and plugging waste conduits, removing contaminated soil and securing a site.

Polycyclic Aromatic Hydrocarbons (PAHs) - Contaminants typically found at MGP sites and associated with coal tar residues.

Remedial Design (RD) - This report will include a detailed description of the remedial objectives and the means by which each essential element of the selected remedial alternative will be implemented to achieve those objectives. It incorporates the findings of the FS Report to provide a remedial design which will be implemented during the performance of the cleanup activities at the site.

Remedial Investigation (RI) - A process to determine the nature and extent of contamination at a site by analyzing data collected from sampling (e.g., water, soil, air, etc.) at a site. Information gathered throughout the RI is then used to conduct a Focused Feasibility Study (FFS), which proposes and evaluates various remedial alternatives for the site.

Responsiveness Summary - The Responsiveness Summary is prepared by the NYSDEC to address public comments, questions and concerns regarding the proposed remedial action to be taken at a site. The Responsiveness Summary is issued as part of the Remedial Action Program.

Volatile Aromatic Hydrocarbons - Benzene, Toluene, Ethylbenzene, Xylene (BTEXs) - Volatile aromatic hydrocarbons and are typical contaminants found at MGP sites and other sites where coal, oil, refined products and other hydrocarbons were burned or used.

Appendix B

IDENTIFICATION OF DOCUMENT REPOSITORY

Patchogue Medford Library
54-60 East Main Street
Patchogue, NY 11772
T: 631-654-4700

NYSDEC Region 1 Office
SUNY-Stonybrook
Stony Brook, NY 11790
Contact: Mr. Walter Parish
(631) 444-0241
Hours: M-F: 9-5 (by appointment)

Appendix C

IDENTIFICATION OF AFFECTED AND/OR INTERESTED PARTIES

Site Owners:

National Grid Corporation 175 East Old Country Road
Hicksville NY 11801

Government Officials

Village Mayor	Paul V. Pontieri, Jr. 14 Baker Street P.O. Box 719 Patchogue, NY 11772 PPontieri@patchoguevillage.org (631) 475-4300
Brookhaven Supervisor	Ed Romaine One Independence Hill Farmingville, NY 11738 Phone (631) 451-6955 Fax (631) 451-6677
Suffolk County Legislator	Robert Calarco 90 W. Main St -Suite 2N Patchogue, NY 11772 Phone (631) 854-1400 Fax: (631) 854-1403
State Assembly Member	Dean Murray 1735 North Ocean Avenue, Suite A Medford, New York 11763 Phone: (631) 207-0073
State Senator	Lee Zeldin 31 Oak Street Suite 20 P Pat Patchogue, NY 11772 Phone: (631)289-1097 Fax: (631)289-1268

Community Groups

Greater Patchogue Chamber of Commerce
James Skidmore, President
15 North Ocean Avenue
Patchogue, New York 11772
(631) 207-1000
info@patchoguechamber.com

Long Island Neighborhood Network
Neil Lewis, Executive Director
7180 Republic Airport
East Farmingdale, NY 11735
Phone: (631) 963-5454
Fax: (631) 963-5466
Email: linnet@neighborhood-network.org

Long Island Mid-Suffolk Business Action
Chairman: Ernest Fazio, Energy Demonstration Center
PO Box 135
Centerport NY 11721
PH: (631) 757-1698
www.limba.net

Local Newspapers Covering Area

Long Island Advance
20 Medford Ave.
P.O. Box 780
Patchogue, NY 11772
Phone: (631)475-1000
Fax: (631) 475-1565

La Tribuna Hispana
P. O. Box 186
Hempstead, NY 11550
888-900-2811 ext 3

Appendix D

IDENTIFICATION OF PROJECT MANAGEMENT CONTACTS

New York State Department of Environmental Conservation

William Wu
625 Broadway
Albany, NY 12233-
7014
(518) 402-9662

New York State Department of Health

Jacquelyn Nealon, Project Manager
NYSDOH, BEEI
547 River St., Room 300
Troy, NY 12180-2216
(800) 458-1158 ext. 27880

National Grid

April Dubison
Community Relations Representative
287 Maspeth Avenue
Brooklyn, NY 11211

Patchogue Project Hotline Telephone – 631 348 6250

Please leave a message on the Hotline and your call will be promptly returned.